

To,
Manabadi Nadu-Nedu Program
Sarva shiksha Abhyan
Vijayawada, AP.

Date: Aug 20

Kind Attn. to
Shri. Murali Krishna

Sub: Price Quotation for concrete repairs, Expansion Joint/Construction Joint treatment, Terrace roof slab Water Proofing

Dear Sir,

With reference to your enquiry and after site & substrate inspection, we are pleased to give price estimation for your kind reference and approval

1. Concrete Repairs – spalled concrete treatment

S.No	Description for Spalled Concrete Repair treatment				
1.	Loose/cracked/spalled concrete to be removed through hammer tap or any means so as the rebars are exposed				
2.	The exposed rebars to be cleaned free from dust, debris and any loose mortar by wire brush scrapping				
3.	Anti-Corrosive Paint application: Apply SmartCare High Performance Zinc Rich Yellow primer – 2 coats and let it air dry for 4 hrs				
4.	Application of Acrylic Bonding Agent: Apply SmartCare Multi-Purpose Polymer (MPP) – 1 coat and let it air dry for 2-4 hrs				
5.	Cover-up/patch up the portion to be repaired with SmartCare Micro Concrete				
L+M Cost Break-Up					
Material Cost					
Product Name	Pack Size	Price	Price per Lit/Kg	Coverage per Lit/Kg.	Price Per Sft
SmartCare High Performance Yellow Primer	20L	4000/-	200	160 sft.	1.3
SmartCare Multi-Purpose Polymer Suprema (MPP)	20L	2780/-	139	20 sft.	7.0
SmartCare Micro Concrete	25Kg	296	12	52 sft.	4.3
Over all Material Cost per Sft.					12.6
Application/Labour Cost					
Cleaning of spalled concrete > Zinc rich primer application > MPP - Bonding agent application > repairing with micro concrete					18
Total L+M Cost Per Sft. for spalled concrete repair					30.6

2. Construction Joint/Expansion Joint Treatment:

S. No	Description
1.	Surface preparation: Joint area to be cleaned so as to make dust & debris free and joint to be opened mechanically to appropriate depth & width
2.	Backer Rod insertion: Backer rod of 20-30% larger in dimension of joint to be made insertion along the joint
3.	Poly Urethane Sealant application: Providing and Application of single component SMART CARE HYBRID PU sealant at the inner portions of the joint, in a groove of 25 mm width and depth of 12-15 mm, and finished smooth using suitable tools after surface preparation, cleaning of the joint sides with a diamond edged tool, providing and placement of a Backer rod of adequate thickness and shape , all as per SOP and as directed by the Manufacturer and the Engineer in Charge
4.	Protection: The treated joint area to be protected by means of Al/SS extrusion fixed with anchor bolts and covered the side portions with sealant
Costing	
L + M pricing as per above methodology per RMT	
1540/-	



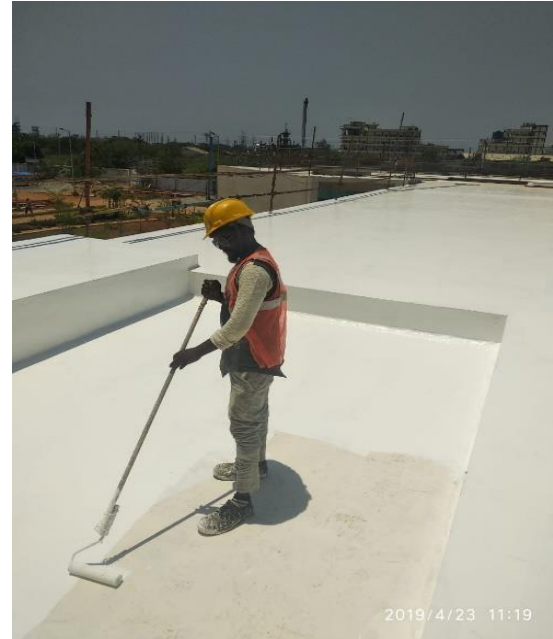
**Expansion Joint treatment with SmartCare Hybrid
PU sealant**

3. Terrace Roof Slab Water Proofing Treatment:

Sr. No.	Methodology for Water Proof Terrace slab areas
1	<p>Surface Preparation: The slab surface to receive the treatment shall be thoroughly free of laitance, scales, oil or any other loose material. Cracks shall be rectified, filled using SmartCare crack seal or Multi-Purpose polymer and dried for 48 hours before proceeding further.</p>
2	<p>Surface Repairing: Hammer tapping test should be performed and loose or de-bonded mortar to be removed and the surface should be repaired with SmartCare Micro concrete. Any surface undulations/slope corrections to be checked prior water proofing and same should be performed with SmartCare Microconcrete. Cracks to be cut open in “V” groove and filling in with SmartCare Crack Seal/PU sealant.</p> <p>Priming with Epoxy based primer: Over the cleaned and SSD surface; apply 1 coat of epoxy primer with 80-100% water dilution by means of brush/rollers so as the entire area is covered neatly</p>
3	<p>PU Water Proof Coating: Supplying and applying Asian Paints SmartCare PU Aqua/Magnum – UV resistant, high build elastomeric Poly Urethane waterproofing coating based on hydrophobic PU, cold applied with spray / brush membrane with an elongation of 400-500% and tensile strength of min 1.5 MPa as per ASTM D 2370, crack bridging ability of 3mm as per ASTM C1305, no leakage upto 7 bars of water pressure as per DIN 1048, shore A Hardness of min. 45 as per ASTM D 2240. 2 coats should be applied in perpendicular fashion by maintaining 4-6 hrs as drying time interval between coatings The system includes final base preparation, epoxy based primer and applying SmartCare PU Magnum/Aqua in two to three coats @ 1.0kg/SqM consumption</p>



1st coat of PU Aqua application after clear epoxy primer coating



2nd coat of PU Aqua application; Coating shall be extended to vertical parapet walls of min. 300mm



Spray compatible for faster & timely completion

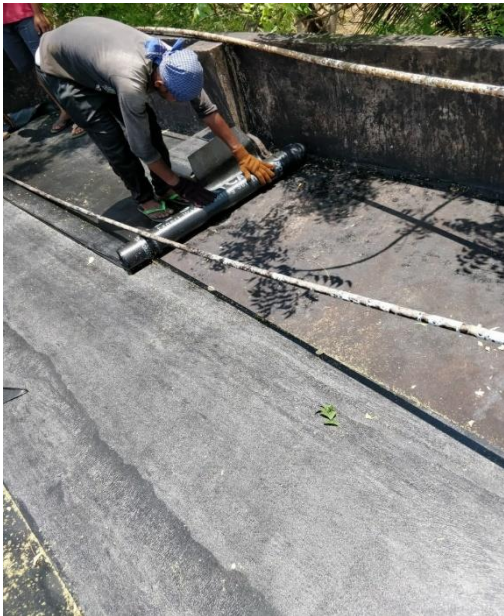


Brief on Terrace Water proofing System with Poly Urethane			
Area	Profile	Suggested Product and ancillaries	Remarks
Terrace	RCC, Sloped flat roof, Open, accessible, less detailing	<ul style="list-style-type: none"> - PU Aqua/Magnum - Epoxy Primer, MPP, PU Sealant - Micro concrete 	PU Aqua/Magnum offers a high performance water proofing system with as a tough, durable and elastomeric membrane with 450% elongation & Tensile strength of min. 1.5 MPA

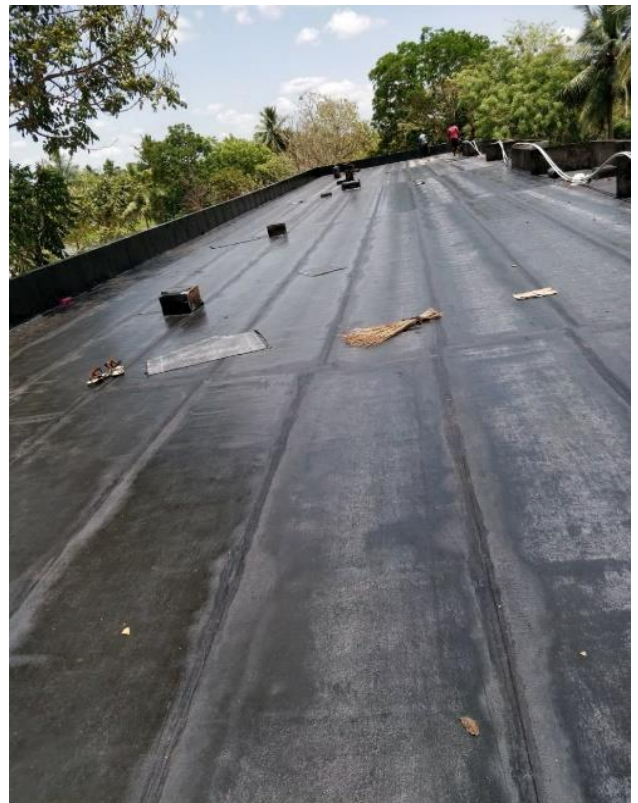
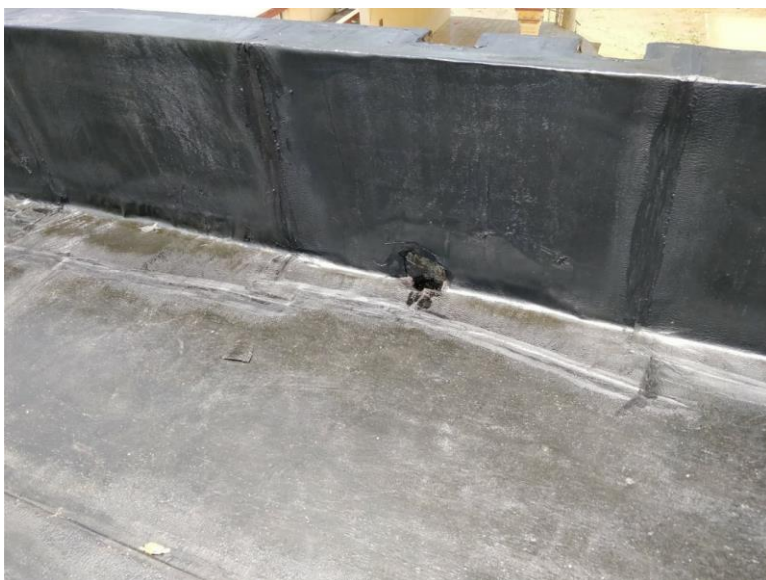
L+M Cost Break-Up					
Material Costing Details					
Product	Pack Size	Price	Price Per Lit/Kg	Coverage per Lit/Kg	Price per Sft
SmartCare PU Aqua/Magnum	20L	4620	231	11 Sft.	21
Epoxy Primer resin	4	663	166	100 Sft	6.6
Epoxy Hardener	4	1988	497		
SmartCare Micro Concrete	25Kg	296	12	52 sft.	4.3
SmartCare Hybrid PU sealant	600ml	390	NA	80	4.8
Over all Material Cost per Sft.					36.7
Application/Labour Costing Details					
- Cleaning > repairs > crack filling > 1 coat Epoxy primer > 2 coats of PU Aqua/Magnum applications					10.0
Total L+M Cost per Sft. for PU Water proofing of terrace					46.7

4. Terrace Water Proofing System with APP modified Bitumen Membrane rolls

Sr. No.	Methodology for Water Proof Terrace slab areas
1	<p>Surface Preparation: The slab surface to receive the treatment shall be thoroughly free of laitance, scales, oil or any other loose material. Cracks shall be rectified, filled using SmartCare crack seal or Multi-Purpose polymer and dried for 48 hours before proceeding further.</p>
2	<p>Surface Repairing: Hammer tapping test should be performed and loose or de-bonded mortar to be removed and the surface should be repaired with SmartCare Micro concrete. Any surface undulations/slope corrections to be checked prior water proofing and same should be performed with SmartCare Microconcrete. Cracks to be cut open in “V” groove and filling in with SmartCare Crack Seal/PU sealant.</p> <p>Priming with Bitumen primer: Over the cleaned and SSD surface; apply 1 coat of bitumen primer by means of brush/rollers so as the entire area is covered neatly</p>
3	<p>APP modified bitumen membrane with 3MM thickness & Polyester fleece reinforcement roll laying:</p> <ul style="list-style-type: none"> - Unroll the membrane and align with marking at all area. Re-roll the roll into its original form so that alignment is not disturbed - Check the burner flame and ensure adjustment - Use gas burner to heat primed surface & underside of membrane to softening point - When the embossing disappears, roll forward & press firmly against substrate to bond from the lower end towards the higher end - Keep overlap margin for min. 100 mm between two adjoining membrane - Ensure constant flow of bitumen is maintained across the whole width of the roll and that a bead of bitumen is extruded from each edge which demonstrates that good seal has obtained



***Terrace water proofing with
SmartCare APP 3mm Polyester
membrane by heat torching method***



Brief on Water proofing System with APP PY bitumen membrane			
Area	Profile	Suggested Product and ancillaries	Remarks
Terrace	RCC, Sloped flat roof, Open, accessible, less detailing	<ul style="list-style-type: none"> - SmartCare APP 3MM Polyester bitumen membrane - Bitumen primer - Micro Concrete, PU Sealant 	APP modified bitumen membrane shall impart robust water proofing for terraces slabs

L+M Cost Break-Up for Terrace water proofing with 3mm APP PY					
Material Costing Details					
Product	Pack Size	Price	Price Per roll/Lit/Kg	Coverage per Lit/Kg	Price per Sft
SmartCare APP 3MM PY bitumen membrane	1M * 10M	1670	1670	90 Sft.	18.5
SmartCare Bitumen Primer	20L	1950	85	50 sft.	1.7
SmartCare Micro Concrete	25Kg	296	12	52 sft.	4.3
SmartCare Hybrid PU sealant	600ml	390	NA	80	4.8
Over all Material Cost per Sft.					29.3
Application/Labour Costing Details					
<ul style="list-style-type: none"> - Cleaning > repairs > crack filling > 1 coat Bitumen primer > laying of APP membrane with heat torching with an aid of gas cylinder 					18.0
Total L+M Cost per Sft. for APP Polyester membrane Water proofing of terrace					47.3

Terms & Conditions:

- The rates quoted above are **INCLUSIVE of GST -18%**, any change in govt levies will be charged as per actual
- All material freight cost included in the pricing mentioned
- Payment of 40% advance during work order release; balance as per work progress
- Actual area measured to be considered for billing & payment purposes
- Necessary sand, cement, power and water are to be provided by client onsite
- Asian Paints technical personal (application engineer or sales engineer) inspection happens during the execution phase and later phases of the work
- 10 years of applicator backed warranty can be extended for terrace areas
- The above prices are valid in AP region only
- Any hike in taxes & duties, at the time of dispatch of goods, the same shall be charged at actual.
- The material will be dispatched within 7-10 Days of time upon receipt of techno-commercially clear Purchase order at our end.

Assuring you of our best services always and looking forward to receiving a favourable communication from your end in due course.

Enclosures:

- Asian Paints company profile
- SmartCare Product brochure
- Product Data Sheets
- Govt. agencies approval copies (CPWD, MES, AAI, etc.,)
- District wise contact details of Asian Paints personnel

For Asian Paints Limited
Syam Kumar
Sales & Specification Engineer
Syam.gurram@asianpaints.com
9136975113

District Wise responsible personnel from Asian Paints SmartCare Division

S. No.	District	Name of Employee	Designation	Contact Details
1.	Ananthapur	Hari Prasad	Sales Officer	9866684764
2.	Kurnool			
3.	Chittoor	Abdul Ghouse	Sales Officer	9100991836
4.	Nellore	Kiran Kumar	Sales Officer	9100991835
5.	Kadapa			
6.	Prakasam	Naresh Kumar	Sales Officer	9100991837
7.	Guntur			
8.	Krishna	Siva Prasad	Sales Officer	7304527575
9.	West Godavari			
10.	East Godavari	Appala Raju	Sales Officer	9100991833
11.	Visakhapatnam	Siva Prasad	Sales Officer	7304527575
12.	Vizianagaram	Gowtham	Sales Officer	9100991834
13.	Srikakulam			